



Christa McAuliffe Charter Elementary School Access and Parent Drop off & Pick up Routes During N2 UEP Construction

Effective August 8, 2019

The City of Cape Coral is improving neighborhoods through the Utilities Extension Project (UEP). This important utility infrastructure program will provide reliable utility services to customers by installing new potable (drinking) water lines, sewer lines and irrigation lines in the area known as North 2. During construction of the North 2 UEP, some utility work will affect routes to and from the Christa McAuliffe Charter Elementary School this year.

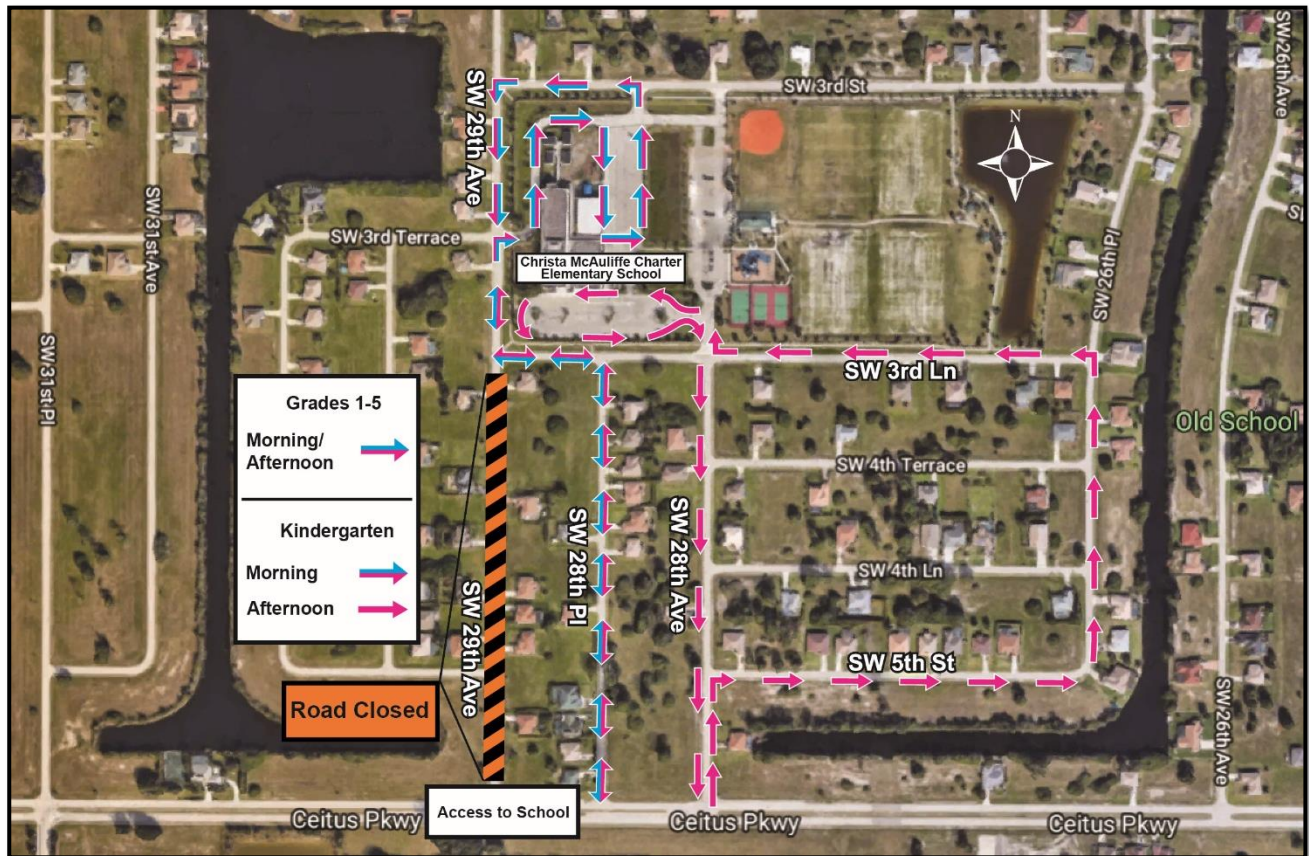
Here's what parents need to know:

Morning Drop-off Route

- **ALL Students** - All parents dropping off students should access the school from Ceitus Parkway to SW 28th Place, then left on SW 3rd Lane, then right to the SW 29th Avenue driveway across from SW 3rd Terrace to access the school. (See blue and pink arrows.) Parents should exit via the same route.

Afternoon Pick-up Routes

- **Grades 1 through 5** – Parents should pick up students using the same route as the morning drop off via SW 28th Place, then left on SW 3rd Lane, then right to the SW 29th Avenue driveway across from SW 3rd Terrace. (See blue and pink arrows.)
- **Kindergarten** – Parents should pick up students using SW 28th Avenue, right on SW 5th Street to SW 26th Place, then left on SW 3rd Lane to the school entrance. (See pink line on the map.)



Parents should follow detour signs. Thank you for your patience while the City's Contractors make utility improvements in the North 2 UEP area. For more information about the Utilities Extension Project, please visit the website at www.capecoral.net/uep.